

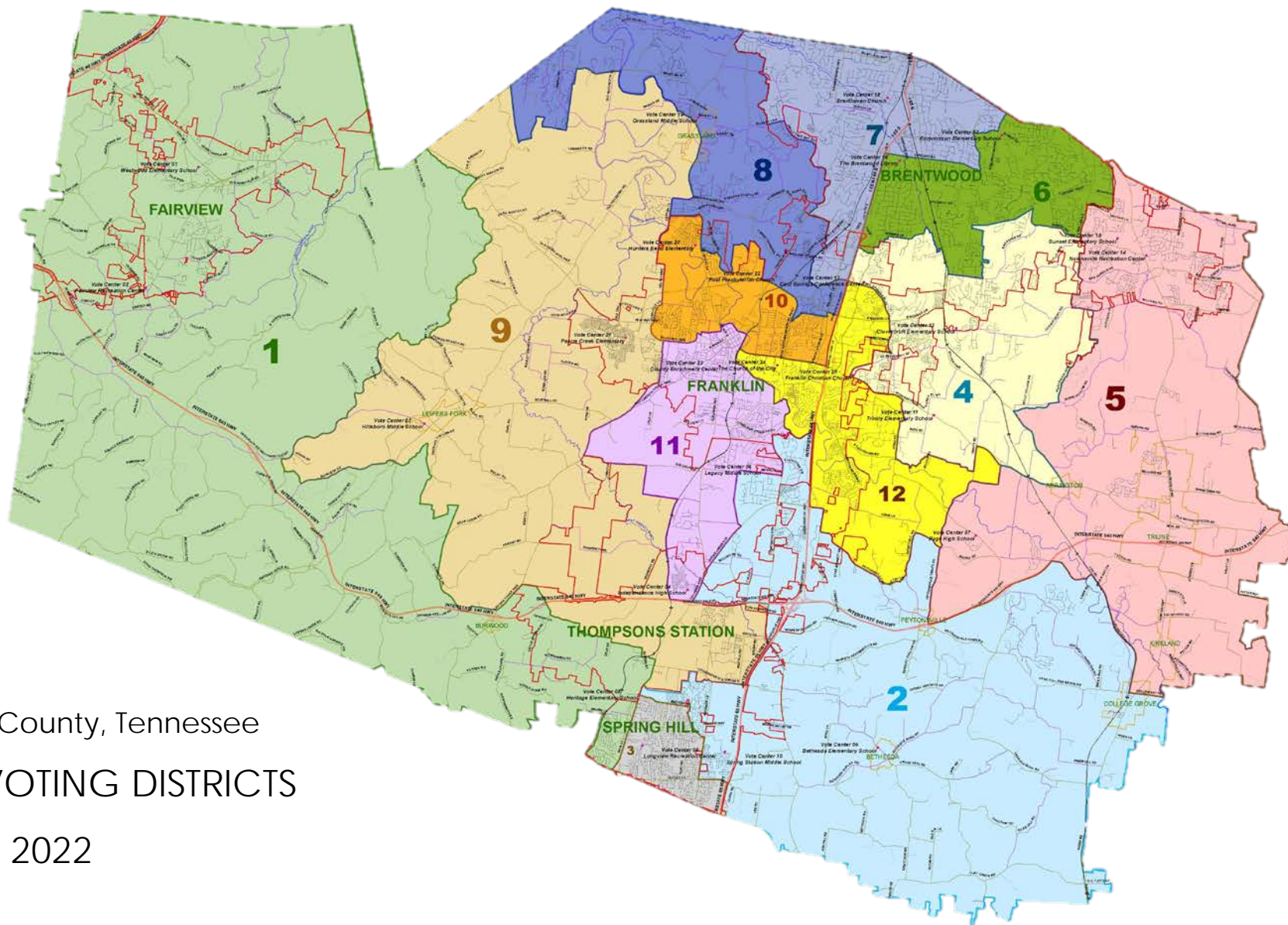




THANK YOU
Nancy Conway







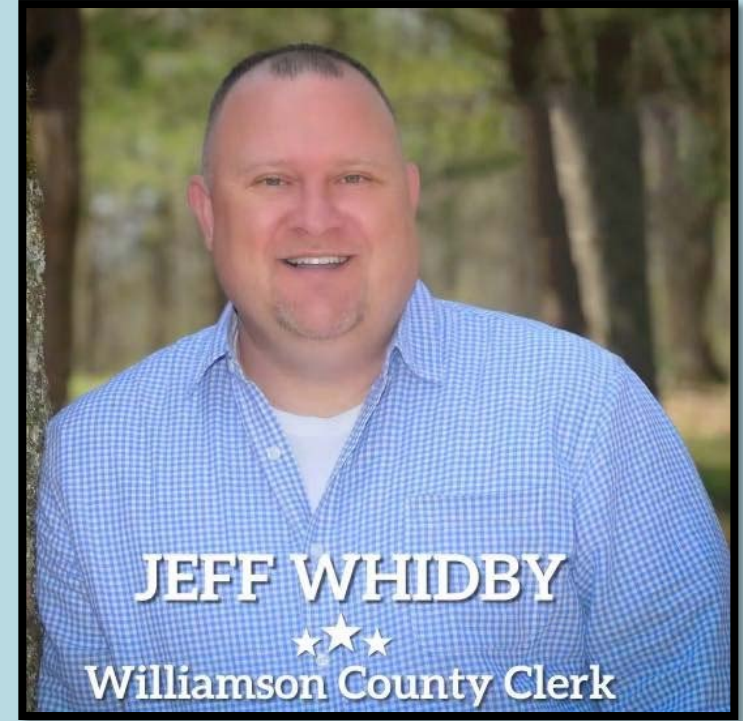
Williamson County, Tennessee
OFFICIAL VOTING DISTRICTS
2022



THANK YOU!
Mrs. Elaine Anderson



Administrative Complex 24 Hour Convenient Drive Thru Kiosk Car Tag Renewals





low

next.

Nov. 30, 1855 283

PASSING AWAY.—The old Court-house, which has so long been a reproach to the pride of the county, and an eye-sore to every person of taste, is about to undergo the process of demolition. The enterprising commissioners who were appointed by the County Court, commenced on Wednesday last, the work of taking away the window blinds, sash, &c., preparatory to a vigorous onslaught upon it next week. The work will be thoroughly done, and the miserable old man will be very soon numbered among the things that were, but are not. So mote it be.

If the concern which stands in close proximity to it, and has been christened by courtesy, the "Market House," is not very soon removed by public authority, we would not be surprised if the "b'hoys" take the matter in hand and cause it to follow in the footsteps of the court-house.

P. S. Since the above was written, the chief glory of the venerable building—the cupola—has been removed. It came down on Wednesday afternoon with a perfect smash, amid the jubilant shouts of as happy a set of citizens as we ever heard shout on any occasion. The work will now go bravely on, and soon not one stone will be left upon another, to tell where the old fabric so long reared its antiquated head.

Many
suffer
into
as the
State
is a
must
plea
of
fatal
ate c
miss
anch.
In
heroi
now
astor
five
larit
men
gods
their
vivid
plea
extra
life.
spirit
reco
our
I
but
"Al
will
N
T
T
O
Sax
Lau

A Scene in Court.

Last Friday afternoon, about 4 of the clock, while the circuit court for this county was in session, and very diligently engaged in investigating one of the numerous cases that engaged its attention, during the term, there came along up Main street, a puff of wind, which drove the sash out of one or two of the upper windows of that crazy old barn that disgraces the centre of our square, and which, by courtesy is called a court house. So terrible was the noise made by the falling sash, that the court and jury, lawyers and clerks, plaintiffs and defendants, sheriffs and spectators, all and singular, were impressed with a conviction that the renement they were inhabiting was about to be prostrated about their ears—and, "such a gettin down stairs, you never did see." Judge and jury, lawyers and clients, sheriffs and constables, criminals and spectators, witnesses and loafers were "taken with a leaving," and every mother's son of them, except our clever old friend, Maj. Stewart "vamosed that rancho" in double quick time. Judge Baxter, it is said, did not run, but he gave one of the handsomest specimens of very "tall walking," on record. Some members of the bar exhibited very respectable speed, and our fat friend Marshall, it is said made time to his office.

on li
about
wha
be
Fra
ded
tude
can
opin
and
loss
gan
Go
bot
W
Ye
by
are
squ
G
at
D
ge
th
of
to
a
h
tl
tl
s
to



Property double assessed in 17th district be refunded to the Trustee, he having already refunded that amount on account of said double assessment.

Releases.

Walter Brown of 15th district, Charles Murphy of the 8th district, and Wilson Canada of the 1st district, were released from poll tax and road work.

R. G. Moore was granted license to peddle in the County free for 12 months.

Action in regard to New Jail.

The report of the committee to investigate and make report in regard to building a new County Jail, reported as follows:

Your committee appointed to look into the necessity of remodeling the old jail or building a new one, together with probable cost of same, report as follows:

1. We report that it is not in the opinion of the committee practicable to remodel the old jail so as to make it conform to the conditions necessary for a model jail, that is, security, proper sanitary conditions, and so as to classify the prisoners.

2. We have had submitted to us plans by the Southern Structural Steel Company, of San Antonio, Texas, and the Pauly Jail Company, of St. Louis, which we have carefully examined. We think plan No. --- submitted by the Pauley Co. to be preferred. The plans are not at hand owing as we believe to a miscarriage by the mails, but they contemplated a two-story brick, two rooms and hall in front for jailor, with ell back. Lower floor for Jailor's office, and compartments for female prisoners and juvenile prisoners, with kitchen. Up-stairs to be used as cell-rooms, 4 cells with room to place second tier of cells on top cells if necessary, 7x7x7, best steel material with gratings opposite windows. The cell capacity is four per cell, or thirty-two in all, including corridors between cells, which could be increased to fifty-two by adding second tier of cells. The probable cost we think for the building, cells, and sewerage, not including furnace or steam pipes, will not exceed \$3500.00.

We also recommend that the old lot be sold and a new one now vacant on the River bank be bought. We think this arrangement can be made. We think the old building can also be readily disposed of.

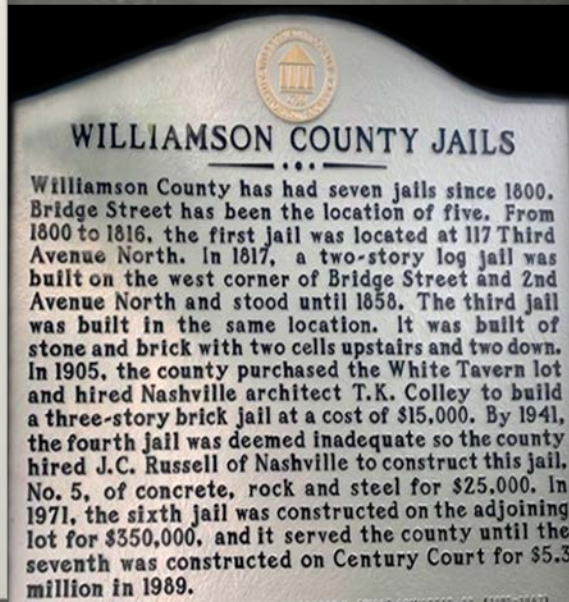
Your committee would most earnestly urge upon the Court the necessity of taking steps in this direction. The old jail is neither secure, or sanitary, nor does it allow proper classification. In no particular does it comply with the requirements of the Statute law or our duty as a civilized people to the unfortunate, vicious though they may be, who are incarcerated in these horrible dungeons.

E. H. Moran.

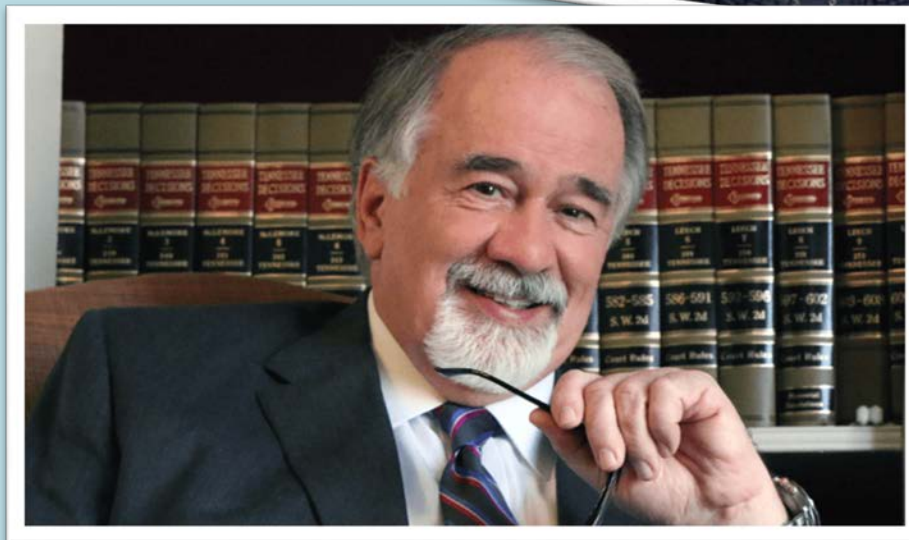
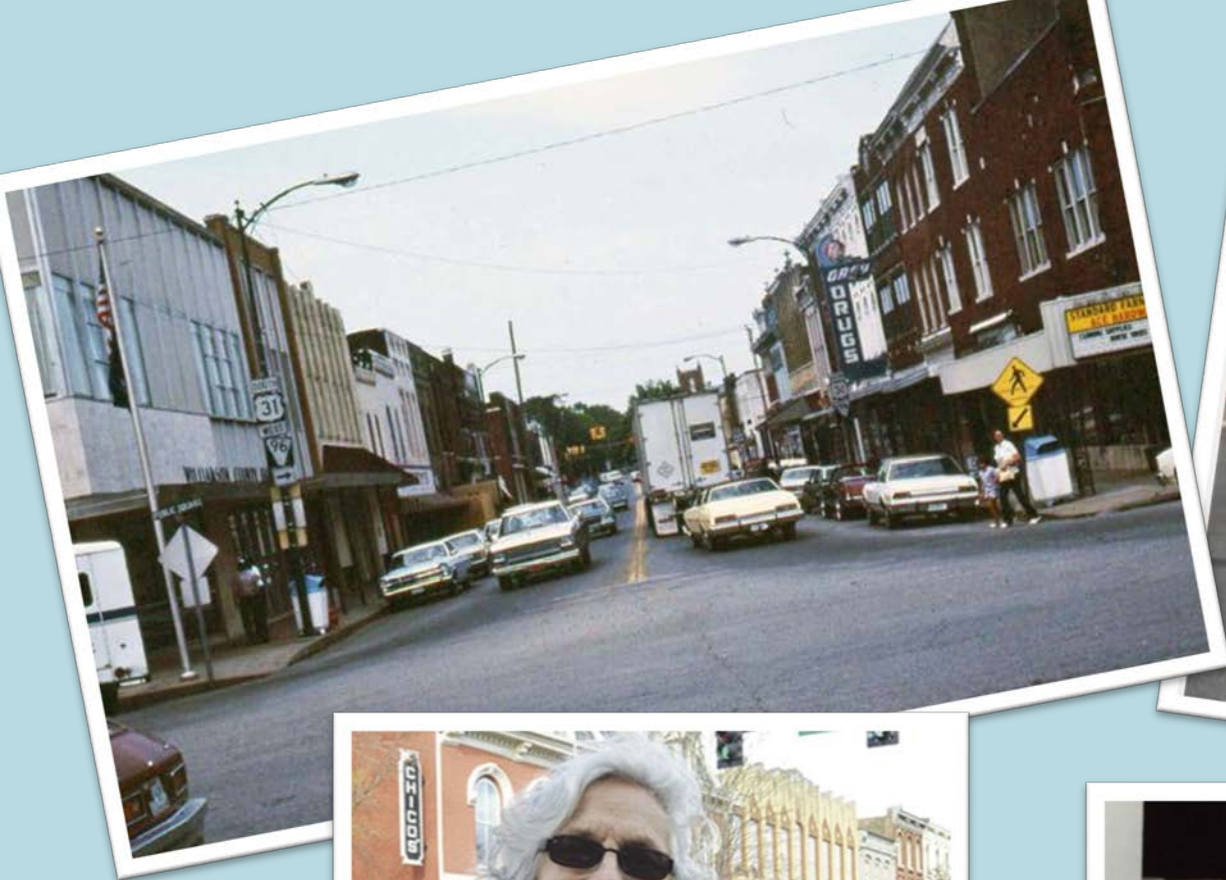
W. D. Irvin.

J. B. Parks.











**\$1 Billion
Visitor
Spending**





FAIRVIEW

BRENTWOOD

NOLENSVILLE

FRANKLIN

THOMPSON'S STATION

SPRING HILL





52 County Schools

42,231 K-12 Students

Vanguard Virtual School

- 2 Schools Currently Renovating
 - Brentwood Middle
 - Page High





2023-24 County Commissioners



Budget History

Budget Year End	Total Expenditures	Total Schools	%	Total Other	%
1987	\$40,578,313	\$23,612,896	58.19%	\$16,965,417	41.81%

2020	\$626,021,220	\$407,179,805	65.04%	\$218,823,415	34.96%
2021	\$629,471,876	\$417,637,393	66.35%	\$211,834,483	33.65%
2022	\$650,431,207	\$433,586,750	66.66%	\$216,844,457	33.34%
2023	\$723,533,814	\$492,545,267	68.07%	\$230,988,547	31.93%
2024	\$794,197,946	\$542,942,397	68.36%	\$251,255,549	31.64%
2025	\$853,207,687	\$575,295,936	67.43%	\$277,911,751	32.57%

**2025	\$853,207,687	\$630,340,180	73.88%	\$222,867,507	26.12%
--------	---------------	---------------	--------	---------------	--------

** Total School debt service is \$55,044,244 in the FY25 budget. If School debt service were accounted for in the School's budget, WC Schools would be 73.88% of the total budget and all Other County Government Funds 26.12%

was elected tax assessor for
 elected at the regular election in August 1900 and who has
 removed from the County.

Rate of taxation
 A majority of Juries being present and voting in the
 affirmative the following rate of taxation was laid for the
 1901 to wit-

On property for county purposes 30 cents on the \$100

" " School " 15 " " " "

" Merchants Ad val for county " 20 " " " "

" Privileges " " 10 " " " "

" Ad val " School " 12 " " " "

" Privileges " " 10 " " " "

Road tax on property " " " " " 4 days work

Tax on privileges for county purposes $\frac{1}{2}$ that levied by State

" " School " $\frac{1}{2}$ " " County

Poll tax to be paid by all male citizens between the ages of 21 and
 50 years \$1.00 unless otherwise exempt.

Cash Relative to General Fund Expenditures Metric | FY 2023

Debt Relative to Assessed Value Metric | FY 2023

Cash on Hand:
\$100,495,523

Annual Expenditures:
\$122,694,812

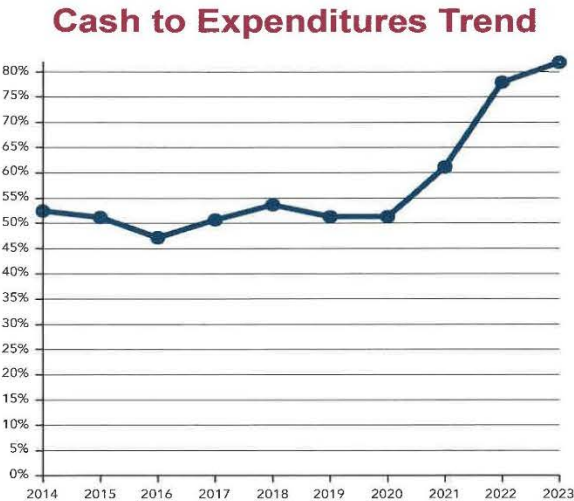
Using only cash,
the County could fund
299

Days of Average Expenditures
before exhausting cash reserves

82%
of Annual Expenditures can
be paid with available cash

No Concern

Target: **Above 16%**
Average County: **55%**



General Government
Debt:
\$1,063,374,051

Assessed Value:
*Defined as: The estimated total
property tax base or the portion of
appraised values within the county
subject to property taxation.*

\$18,361,374,460

6%
Ratio of outstanding debt
relative to assessed value

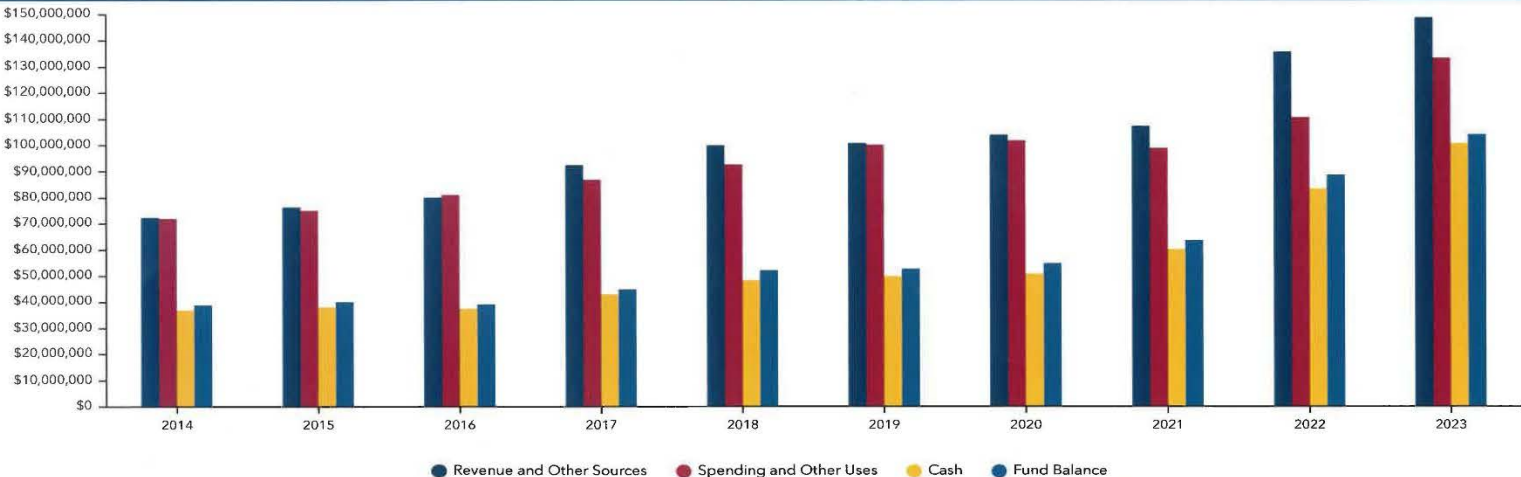
No Concern

Target: **Below 8%**
Average County: **3%**

As a best practice, counties should set debt limits or acceptable ranges. High debt service obligations can reduce financial flexibility and crowd out other potential expenditures. One recommendation is keeping the total outstanding debt below 8% of property assessed value.

As a best practice, counties should have cash reserves sufficient to cover at least two months or 60 days of average expenditures without using additional financing resources. Without adequate reserves, a county could expose itself to greater fiscal distress risk.

General Fund 10-Year Financial Trend | FY 2014 - FY 2023



Comptroller Budget Review | FY 2024

Budget Status: **Approved**
Budget Certificate: **Yes**

To qualify for a budget certificate, a county must:

- * Adopt budget on or before fiscal year end
- * File budget with COT Local Government Finance within 15 days of adoption
- * Have no issues of concern during review
- * Not be under oversight of Tennessee Board of Utility Regulation

For more information: tncot.cc/budgetcertificates

Williamson County Assessment Summaries

Year	Total Assessment Value	% of Change	County Tax Rate	Certified Rate
2003	\$4,255,397,984		\$2.84	-
2004	\$4,435,170,919	4.22%	\$2.84	-
2005	\$4,703,936,855	6.06%	\$2.84	-
2006	\$6,108,202,133	29.85%	\$2.31	
2007	\$6,549,575,595	7.23%	\$2.31	-
2008	\$6,943,125,137	6.01%	\$2.31	-
2009	\$7,264,611,608	4.63%	\$2.31	-
2010	\$7,432,061,942	2.30%	\$2.31	-
2011	\$8,289,540,072	11.53%	\$2.31	
2012	\$8,345,098,319	.67%	\$2.31	-
2013	\$8,587,411,949	2.90%	\$2.31	-
2014	\$8,879,961,421	3.40%	\$2.31	-
2015	\$9,208,781,293	3.70%	\$2.31	-
2016	\$11,672,948,311	26.76%	\$2.15	
2017	\$12,111,056,193	3.7%	\$2.15	-
2018	\$12,611,538,646	4%	\$2.15	-
2019	\$13,063,941,061	3.5%	\$2.22	-
2020	\$13,531,942,524	3.58%	\$2.22	-
2021	\$17,899,788,530	32.27%	\$1.88	
2022	\$18,240,524,238	1.90%	\$1.88	-
2023	\$18,868,562,380	3.44%	\$1.88	-
2024	\$19,298,099,615	2%	\$1.88	-

** - Represents Reappraisal Year

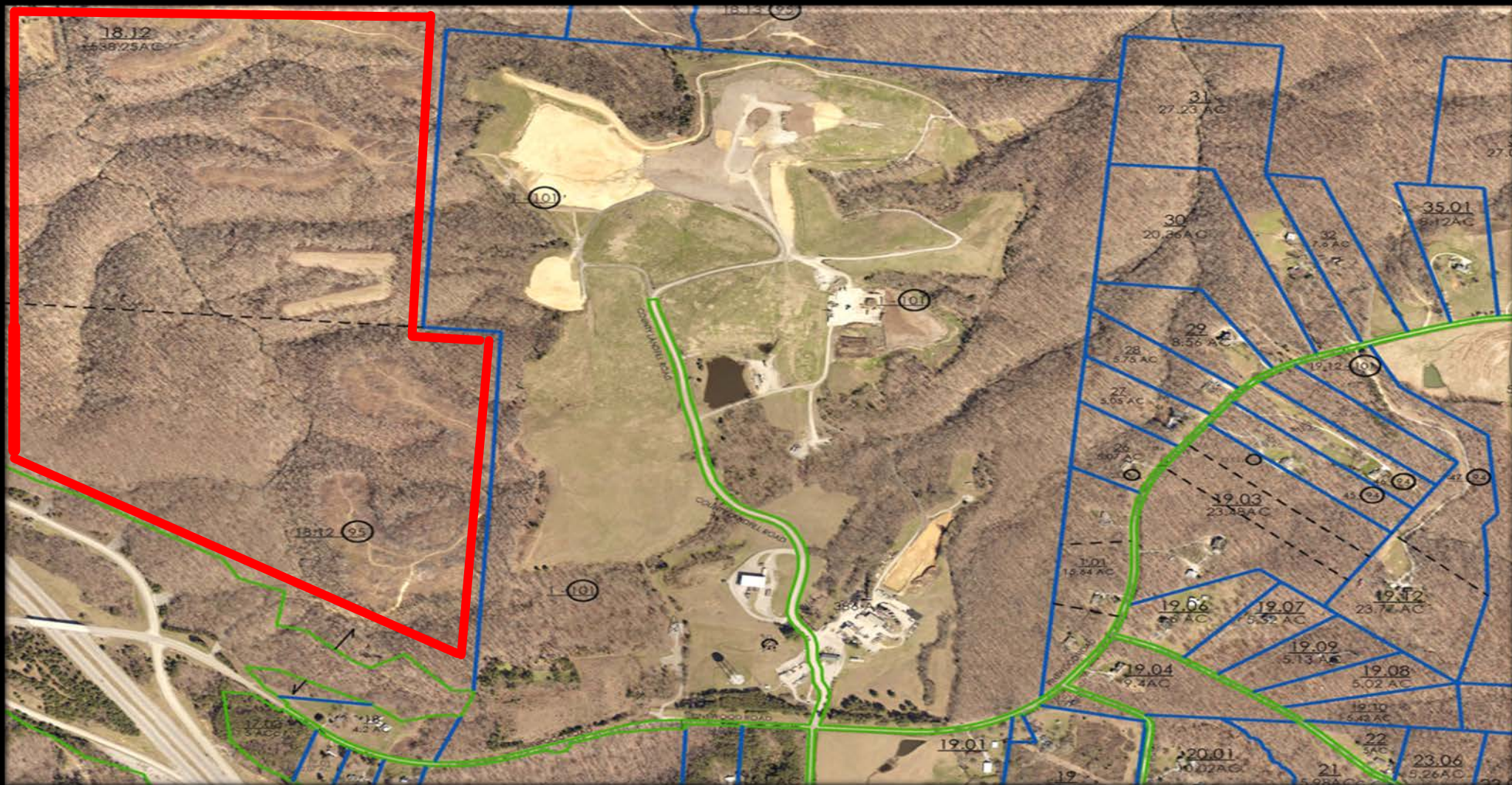
Assessment values are June of each year.

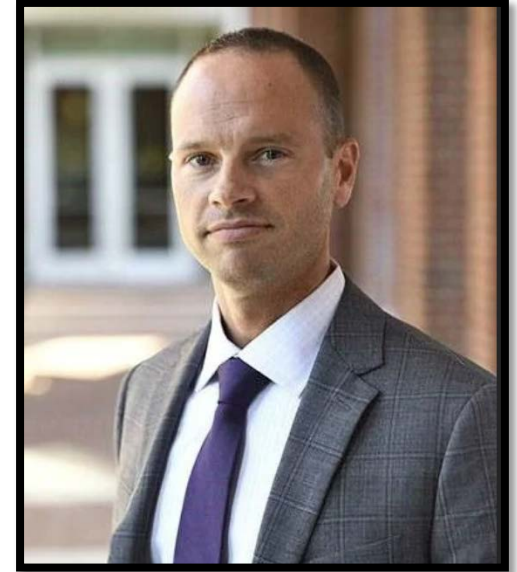
An aerial photograph showing a large industrial facility, likely a waste transfer station or landfill, situated in a rural area. The facility features several large, light-colored piles of material, possibly sand or gravel, and a network of roads and tracks. The surrounding landscape is a mix of green fields and dense forest. The text "WILLIAMSON COUNTY SOLID WASTE DEPARTMENT" is overlaid in a large, white, serif font at the top of the image.

WILLIAMSON COUNTY SOLID WASTE DEPARTMENT

5750 PINWOOD ROAD
FRANKLIN, TN 37064

Google Earth





Be prepared.

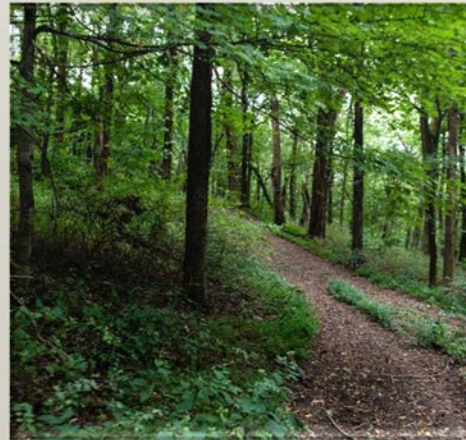
Stay alert.

Get involved.



Peacock Hill Park

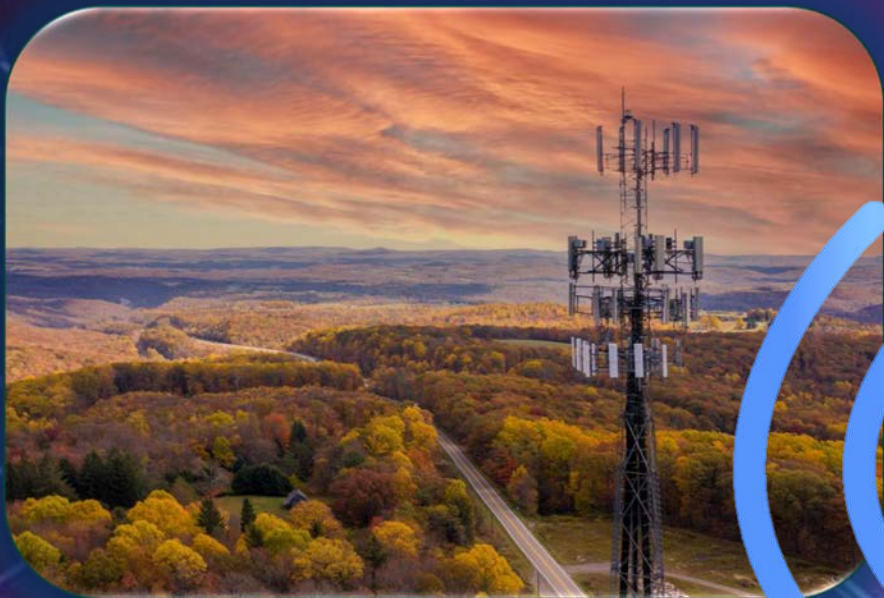
246 acre Passive Nature Park
College Grove Community





HOWDY!

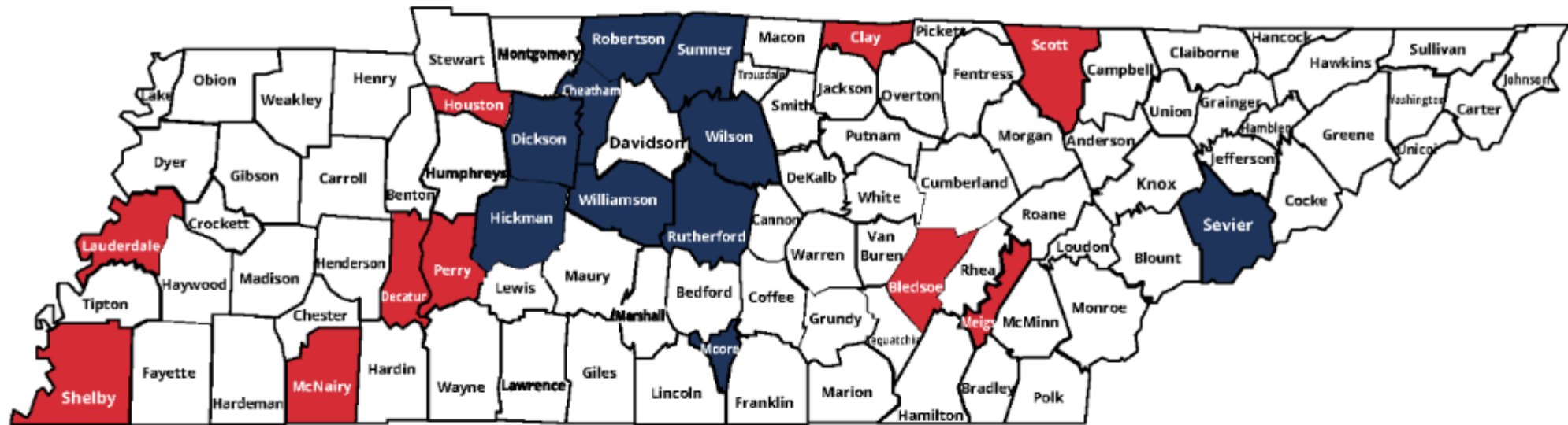






United States[™]
Census
Bureau





Lowest County Unemployment Rates

<u>Rank</u>	<u>County</u>	<u>April 2024 Pre. Rate (%)</u>
1	Williamson	2.0
2	Sevier	2.1
3	Moore	2.2
4	Sumner	2.2
5	Dickson	2.2
6	Wilson	2.2
7	Rutherford	2.2
8	Cheatham	2.2
9	Hickman	2.3
10	Robertson	2.3

Highest County Unemployment Rates

<u>Rank</u>	<u>County</u>	<u>April 2024 Pre. Rate (%)</u>
95	Lauderdale	4.1
94	Clay	4.1
93	Bledsoe	3.9
92	McNairy	3.7
91	Perry	3.7
90	Shelby	3.7
89	Meigs	3.7
88	Houston	3.7
87	Scott	3.6
86	Decatur	3.5



VisitFranklin.com



Committee Sign-Ups

Scan the QR code or click the link for the committee you wish to volunteer for and sign up today!



[Agriculture
&
Floriculture](#)



[Competitive
Entries](#)



[Courtesy
Carts](#)



[Creative &
Culinary
Arts](#)



[Cultural
Arts](#)



[Little 1'S
Farming](#)



[Logistics](#)



[Sponsorship
Committee](#)



[Volunteer
Check-In](#)



[Youth
Department](#)



