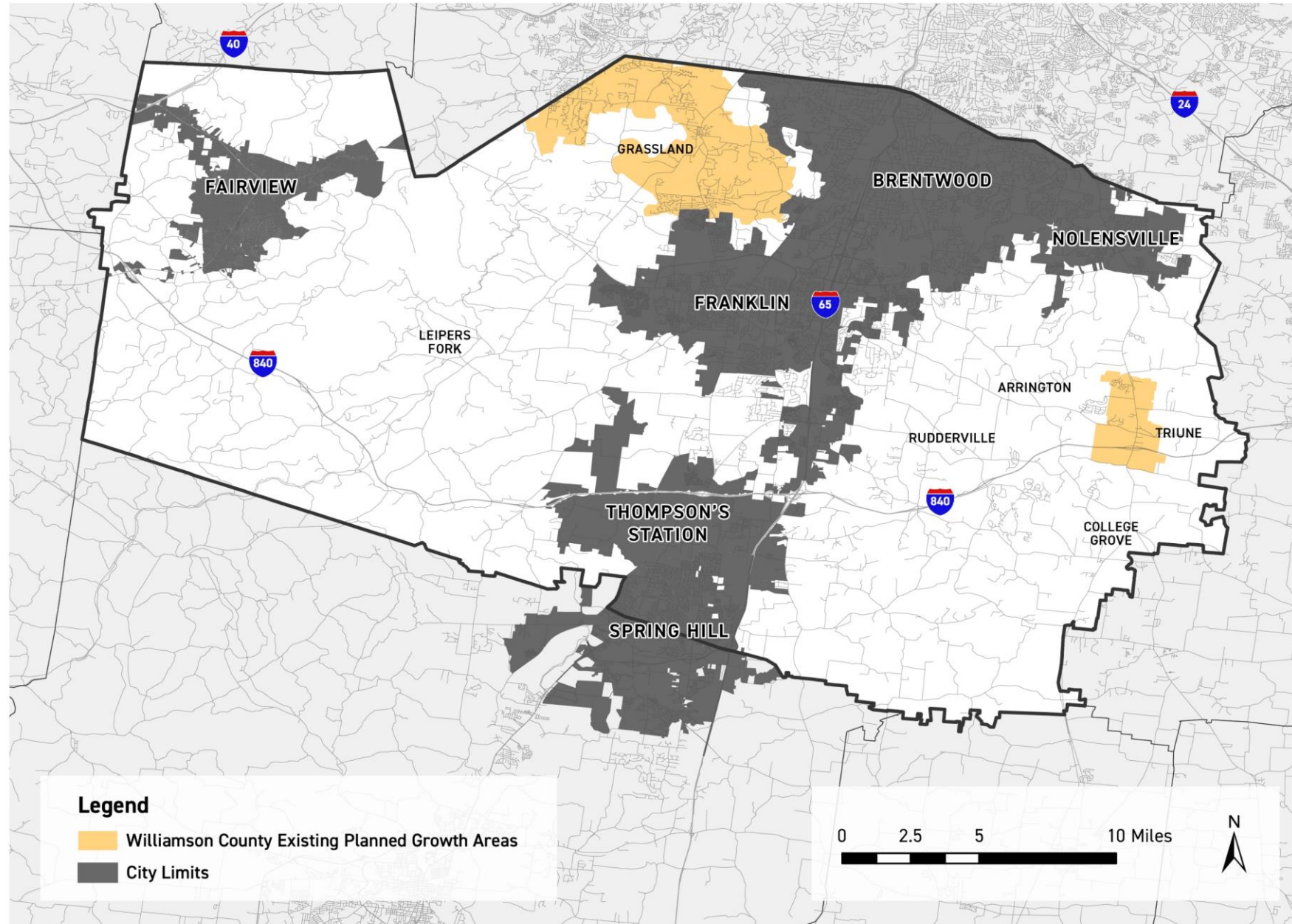


WILLIAMSON COUNTY PROPOSED PGA'S AND RURAL AREAS

COORDINATING COMMITTEE MEETING

AUGUST 29, 2023

Williamson County, TN - Existing Planned Growth Areas



WILLIAMSON2040

Preserve → Enhance → Envision

COMPREHENSIVE LAND USE PLAN

WILLIAMSON COUNTY, TENNESSEE

Adopted: 03/12/2020

FILED 3/24/20
ENTERED 11:55 a.m.
ELAINE ANDERSON, COUNTY CLERK JW

RESOLUTION NO. 3-20-5

Requested by: Regional Planning Commission

RESOLUTION OF THE WILLIAMSON COUNTY BOARD OF COMMISSIONERS TO ENDORSE THE 2040 WILLIAMSON COUNTY COMPREHENSIVE LAND USE PLAN

WHEREAS, Williamson County, Tennessee by and through its Regional Planning Commission currently has a Comprehensive Land Use Plan; and

WHEREAS, the current Comprehensive Land Use Plan was adopted in 2007; and

WHEREAS, given the extensive growth and population increase that Williamson County has experienced since 2007, the Regional Planning Commission endeavored to update and revise the 2007 Comprehensive Land Use Plan; and

WHEREAS, consultant McBride Dale Clarion, assisted by KCI Technologies and TischlerBise, was engaged to work with the County to prepare the revision to the Comprehensive Land Use Plan; and

WHEREAS, an Advisory Committee, consisting of members of the Board of County Commissioners, Planning Commission, Highway Commission and other citizens was formed to work with Planning staff and the consulting team in order to serve as a sounding board and source of information and to help reconcile various viewpoints received from the community; and

WHEREAS, a wealth of information was assembled and analyzed in preparing the Plan, including population trends and projections, roadway infrastructure needs, desired future community character, and overall fiscal impacts associated with alternative development scenarios; and

WHEREAS, the planning process placed a very strong emphasis on public participation, including two well-attended public meetings at key planning stages as well as multiple online opportunities for citizen feedback, resulting in hundreds of citizens providing meaningful input and ensuring that the Plan reflects a broad base of community values; and

WHEREAS, through this study and public input, the Reg created a revised vision for Williamson Cou

WHEREAS, that vision is expressed by the revised and u Plan, a copy of which is attached and incorp

WHEREAS, the Advisory Committee has confirmed its objectives as expressed in the Plan; and

WHEREAS, on March 12, 2020, the Regional Planning C public hearing and consideration of adoption Use Plan, which is attached hereto and inco

WHEREAS, after its review of the revised Comprehensive gathered and public input received through l County Commissioners finds that it is in the Williamson County to provide its support at vision, goals and objectives and the plan for Comprehensive Land Use Plan.

NOW, THEREFORE BE IT RESOLVED, by the Williamson County Board of Commissioners on this the 9th day of March, 2020 that the revised Comprehensive Land Use Plan, as presented, and the maps incorporated or referenced therein is hereby endorsed.

NOW, THEREFORE BE IT FURTHER RESOLVED, that the Williamson County Board of Commissioners recommends adoption of the revised Comprehensive Land Use Plan by the Williamson County Regional Planning Commission.

Beth Lothers
Beth Lothers, County Commissioner

Matt Williams
Matt Williams, County Commissioner

Gregg Lawrence
Gregg Lawrence, County Commissioner

COMMITTEES REFERRED TO AND ACTION TAKEN:

| | | |
|--------------------------|---------|------------|
| Property Committee | For 7 | Against 0 |
| Budget Committee | For 5 | Against 0 |
| Commission Action Taken: | For: 22 | Against: 1 |
| | Pass: | Out: |

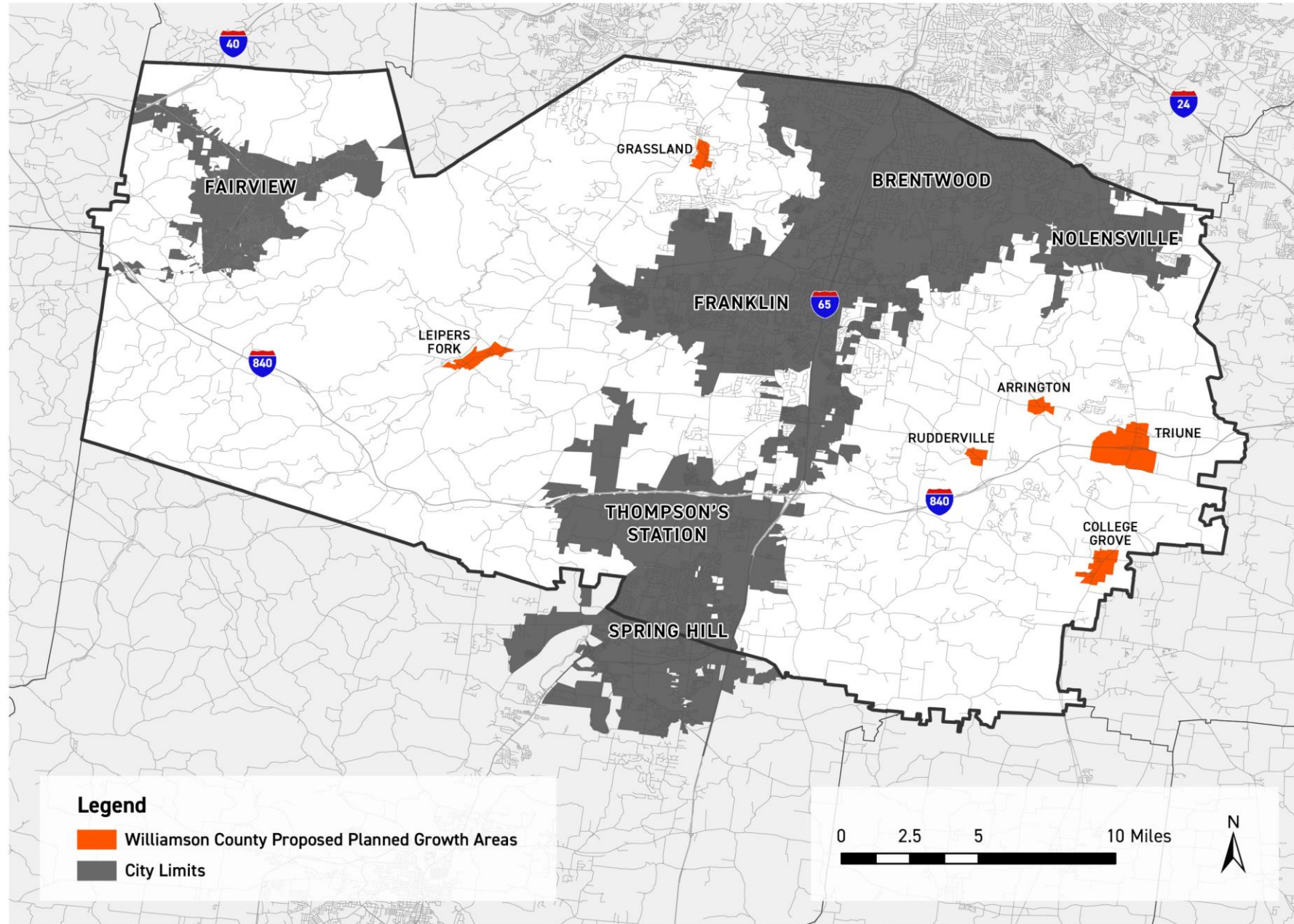
Elaine Anderson
Elaine Anderson, County Clerk

Thomas W. Little, Jr.
Thomas W. Little, Jr., Commission Chairman

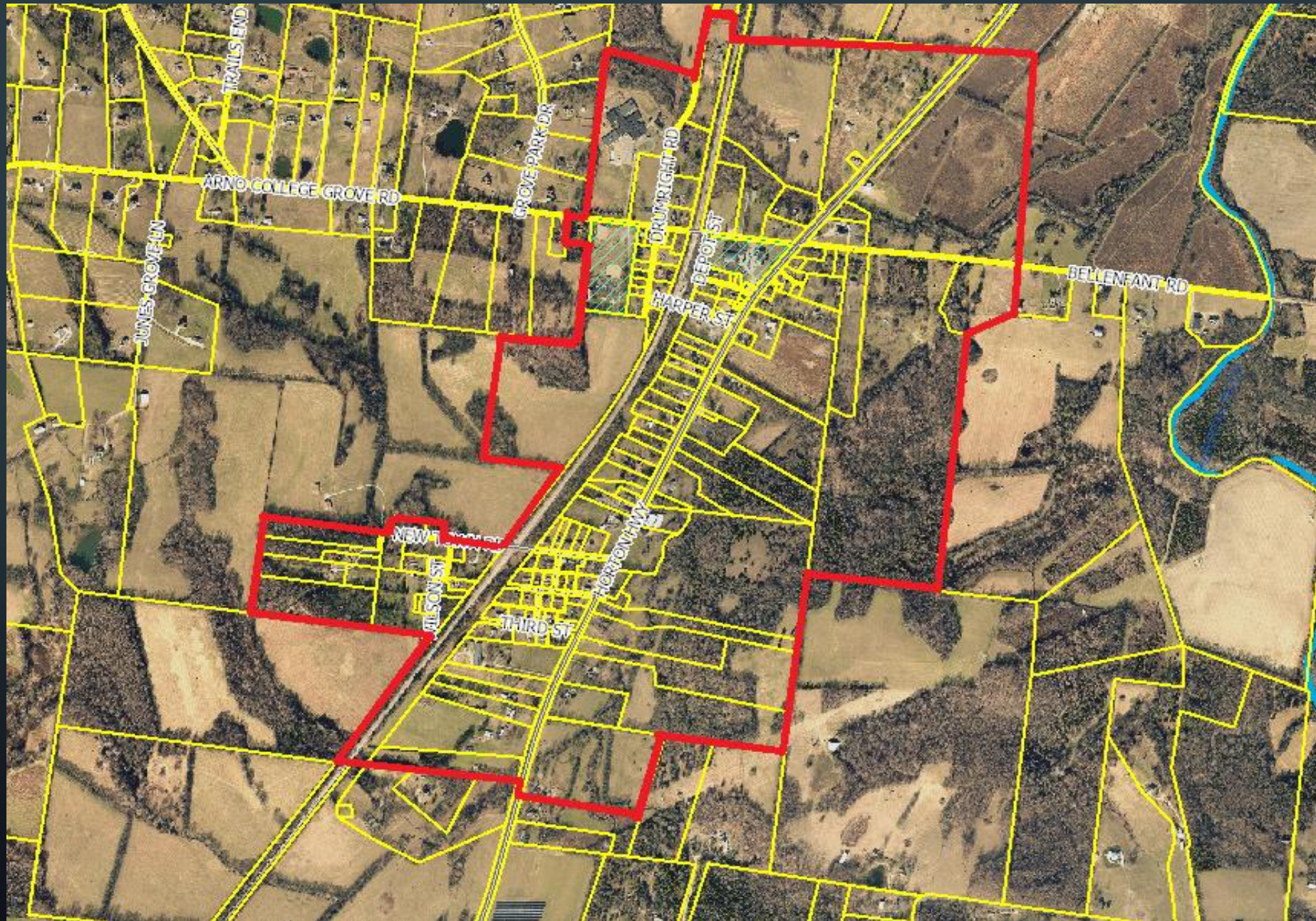
Rogers C. Anderson
Rogers C. Anderson, County Mayor

03/14/2020
Date

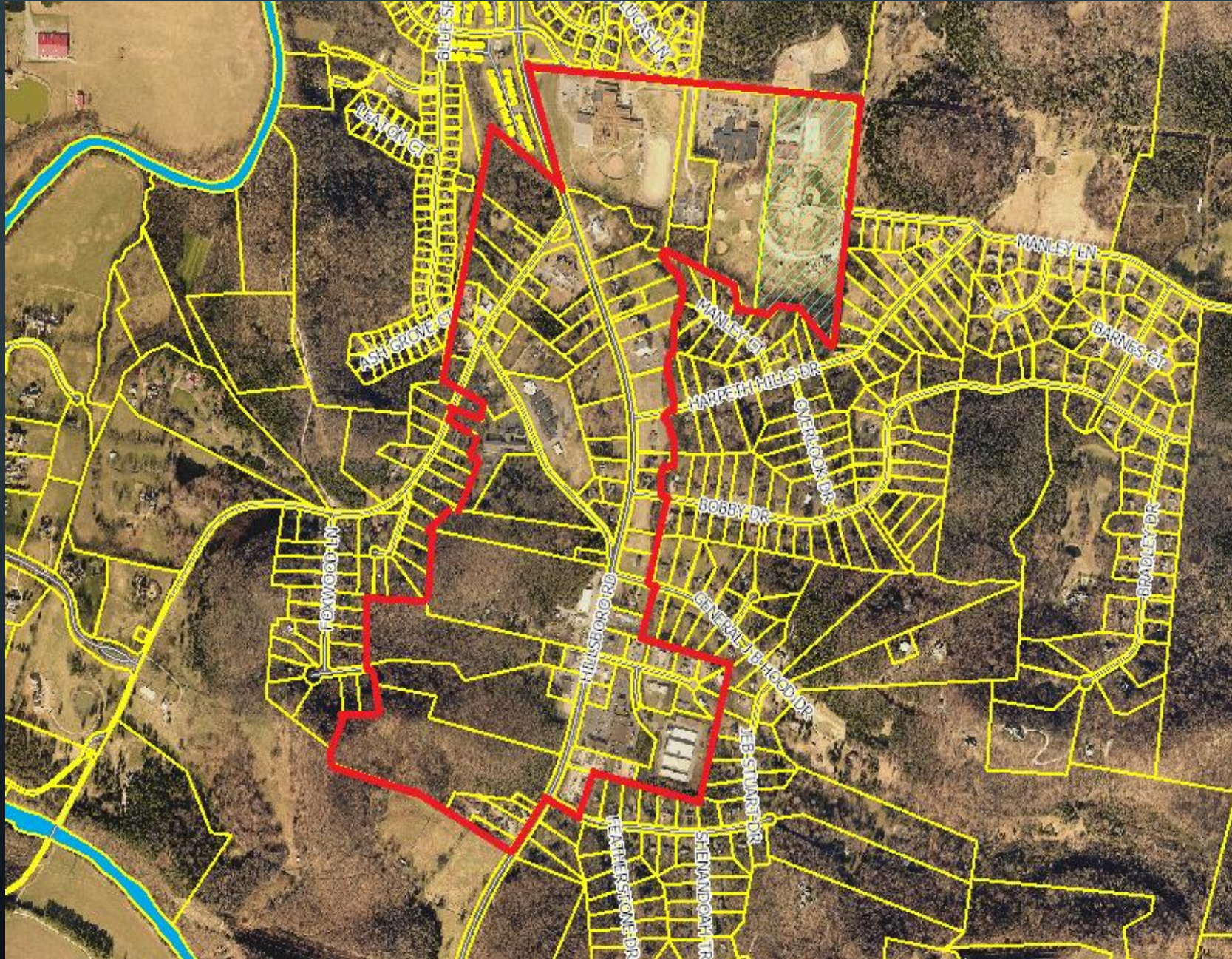
Williamson County, TN - Proposed Planned Growth Areas



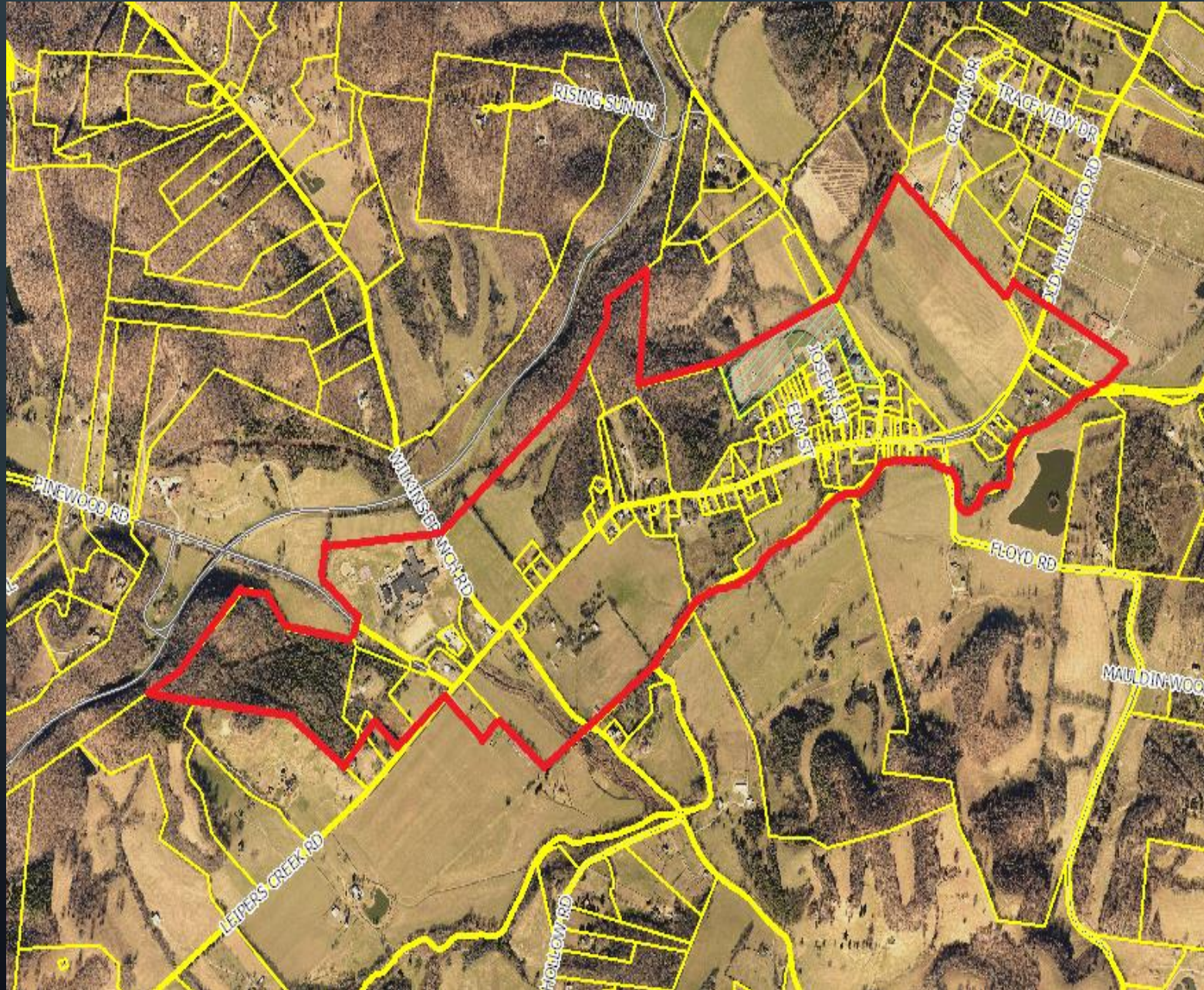
COLLEGE GROVE PGA



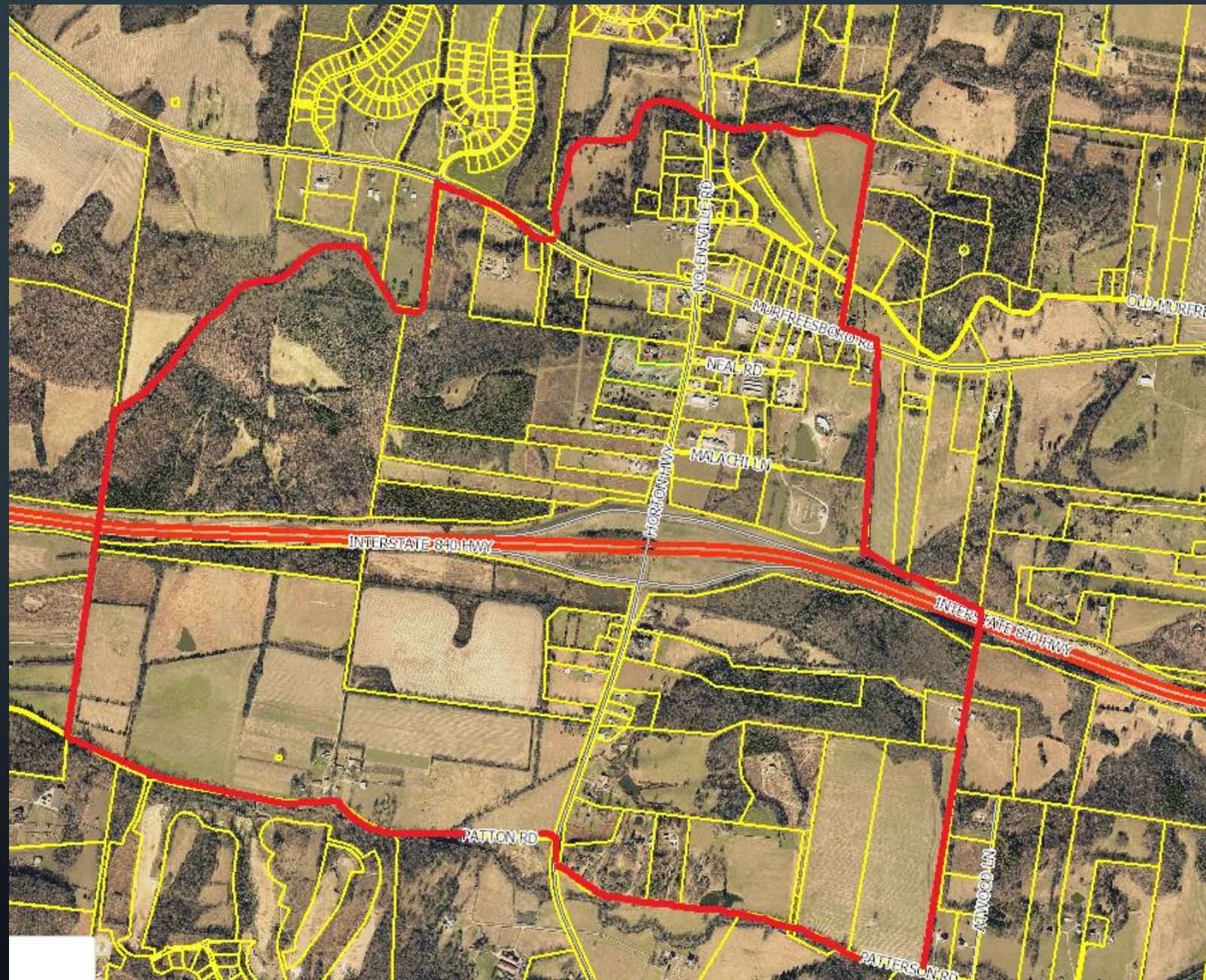
GRASSLAND PGA



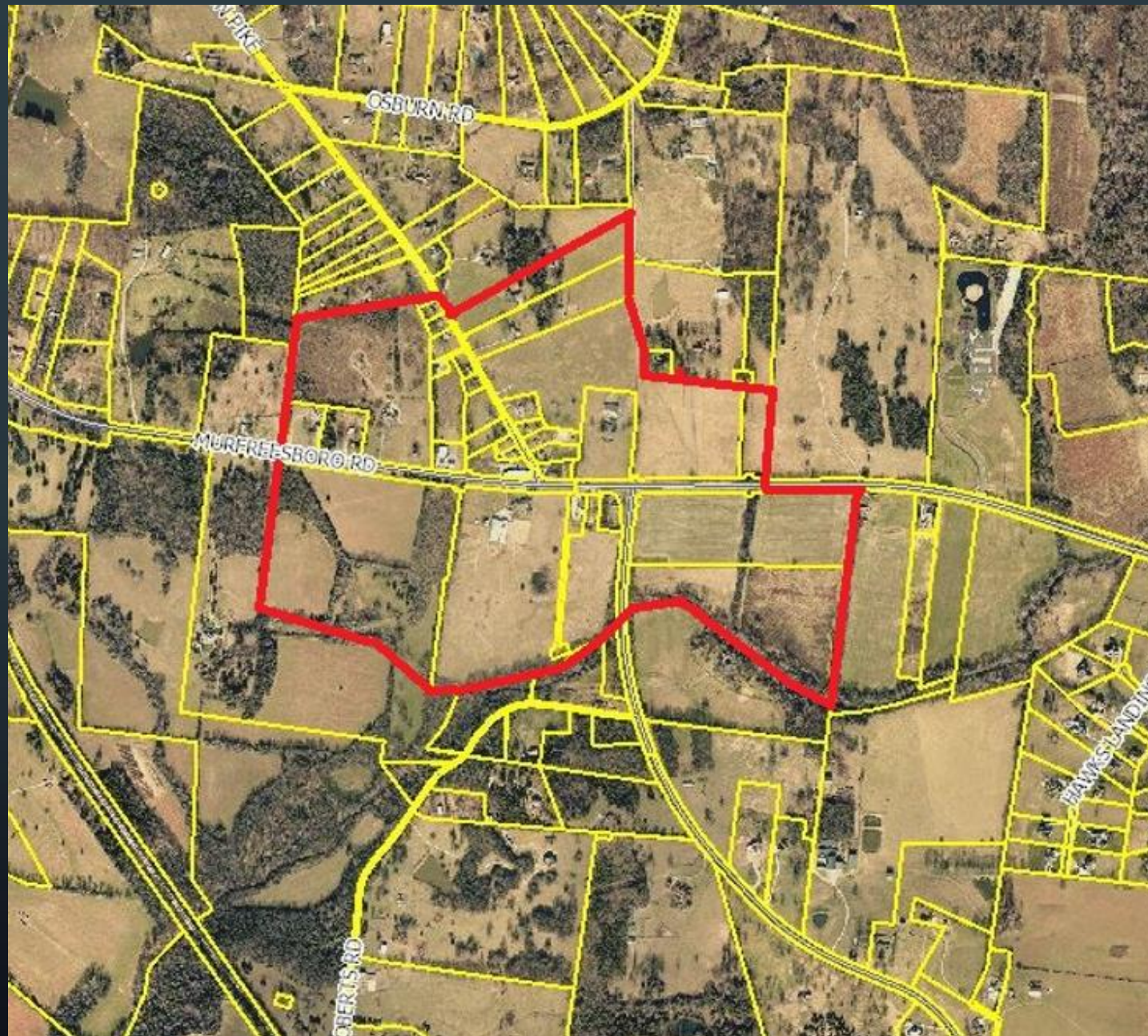
LEIPER'S FORK PGA



TRIUNE PGA



ARRINGTON PGA



RUDDERVILLE PGA



PUBLIC HEARINGS

July 13, 2023

August 14, 2023