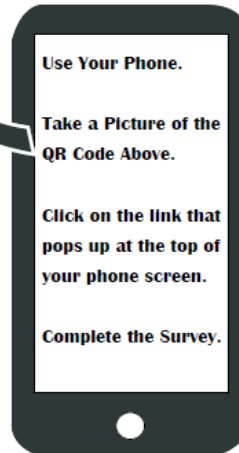


City of Franklin UGB Update

**Have Your Say...
Fill Out a Survey
Only 3 Questions**



**Use your phone to fill out the survey
OR
Type in the link below**
<https://www.surveymonkey.com/r/UGBUpdate>



Public Outreach starting in 2021

- ☐ August 12, 2021 Community Kickoff Meeting (virtual)
- ☐ Mailers sent to property owners proposed to be added or removed
- ☐ City of Franklin media release, social media posts, online survey
- ☐ Email distribution list
- ☐ Publicized open office hours
- ☐ Community Hybrid Meetings in September of 2021
- ☐ Several BOMA Work Sessions and Joint BOMA/FMPC Workshops
- ☐ Followed BOMA guidance
- ☐ BOMA approval of Resolution 2023-44 on 8/22/23

Visit www.franklintn.gov/ugb for more information

Franklin UGB Existing and Proposed

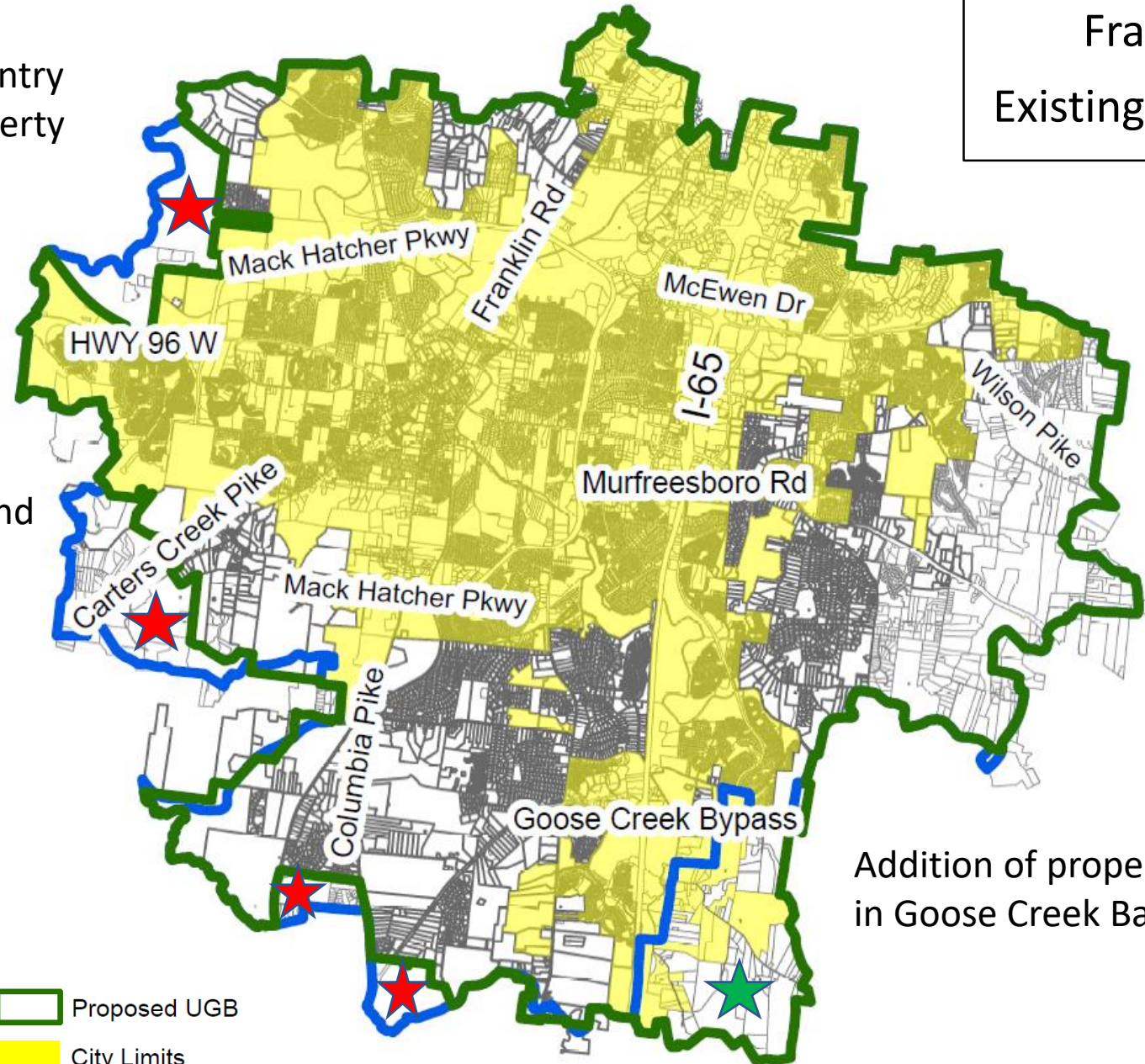
Removal of Gentry Farm and property directly north

Removal of Southall Farms and properties to north and west

Addition of properties in Goose Creek Basin

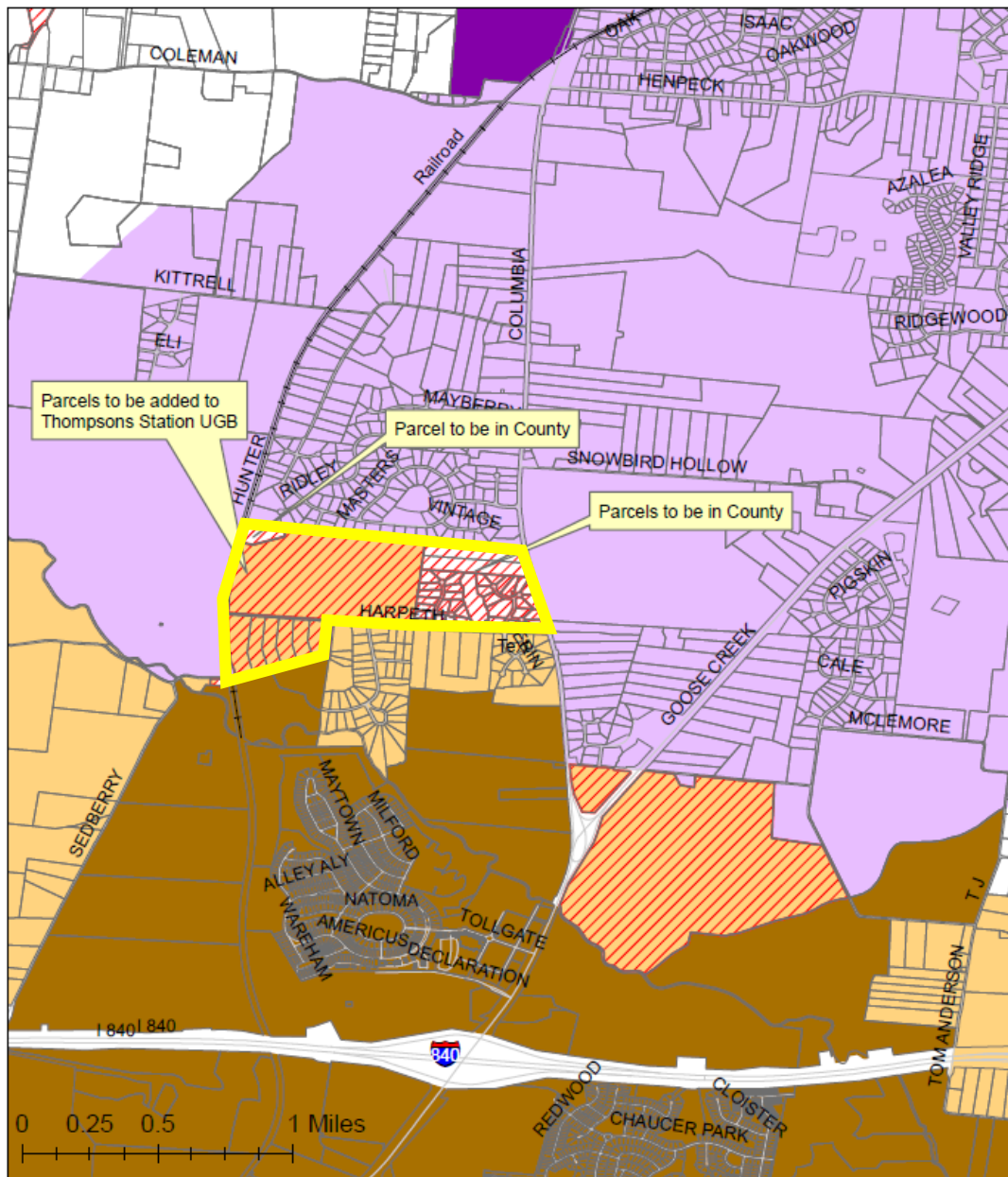
Legend

- Parcels
- Current Franklin UGB
- Proposed UGB
- City Limits






US 31 Columbia Pike Reference Map

- On 8/22/23, the Franklin BOMA voted to remove the yellow highlighted parcels from its UGB due to previous sewer denial approvals requested by the property owner so the property could develop in the County, under the County's regulations.
- Furthermore, BOMA voted to advise its Coordinating Committee Representatives to advocate leaving the yellow highlighted properties outside of any municipality's UGB so it can develop in the County.

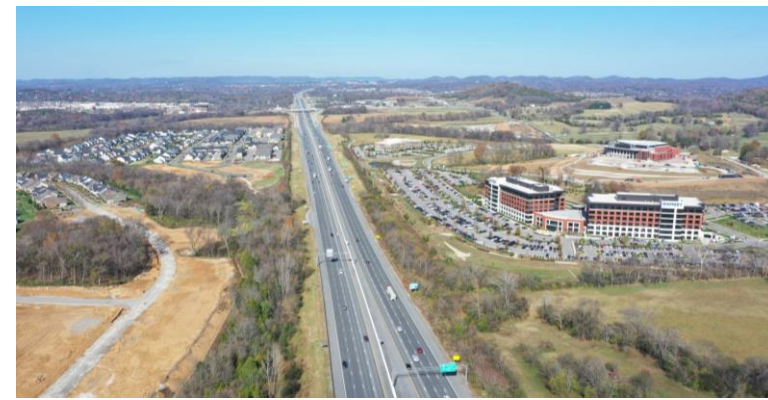


Legend

| | | |
|---|---|---|
|  Franklin City Limits |  Thompson's Station Town Limits |  County Boundaries |
|  Franklin Proposed UGB |  Thompson's Station Proposed UGB |  Removal from Franklin UGB |

Summary

- Franklin has been a fast growing community since the 1980s and continued population growth is anticipated.
- Recommending the addition of 2,173 acres to the UGB
 - The City has annexed over 800 acres outside of its UGB in the Goose Creek area
 - Gravity sewer service can be extended into the territory to be added
 - Roadway improvements will be needed and coordinated with new development, but are included in the Major Thoroughfare Plan.
- Recommending the removal of 2,534 acres from the UGB to help preserve rural character and honor the requests of property owners
 - North of New Highway 96 West
 - Along Carters Creek Pike and Southall Road
 - Along US 31 Columbia Pike



| Year | Franklin's Population Projections |
|------|-----------------------------------|
| 2020 | 83,454 |
| 2030 | 106,409 |
| 2040 | 128,089 |

